

Henry 2 LWD RT 500MD

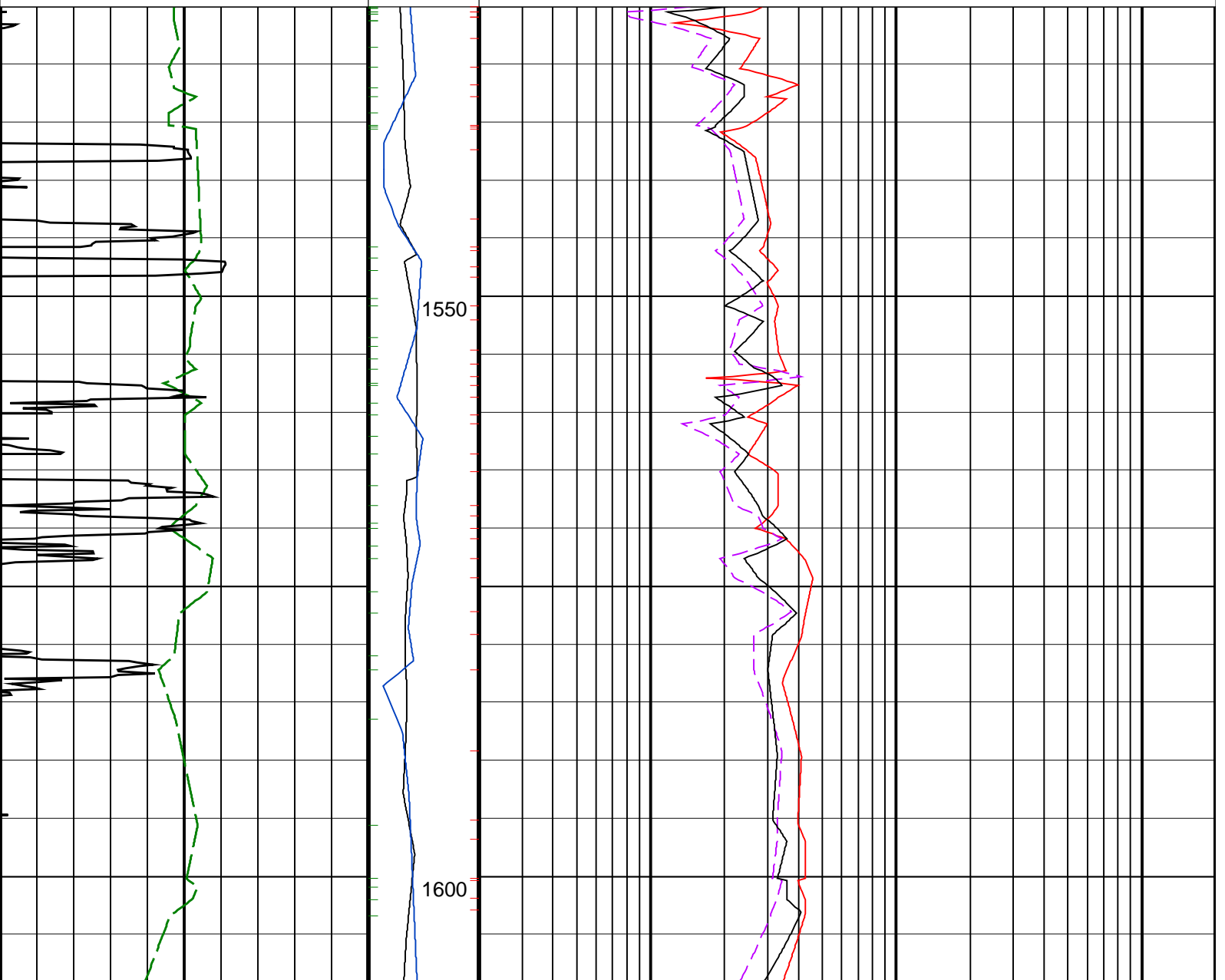
IDEAL Version: ID13_0C_11 <MD > Vertical Scale: 1:500

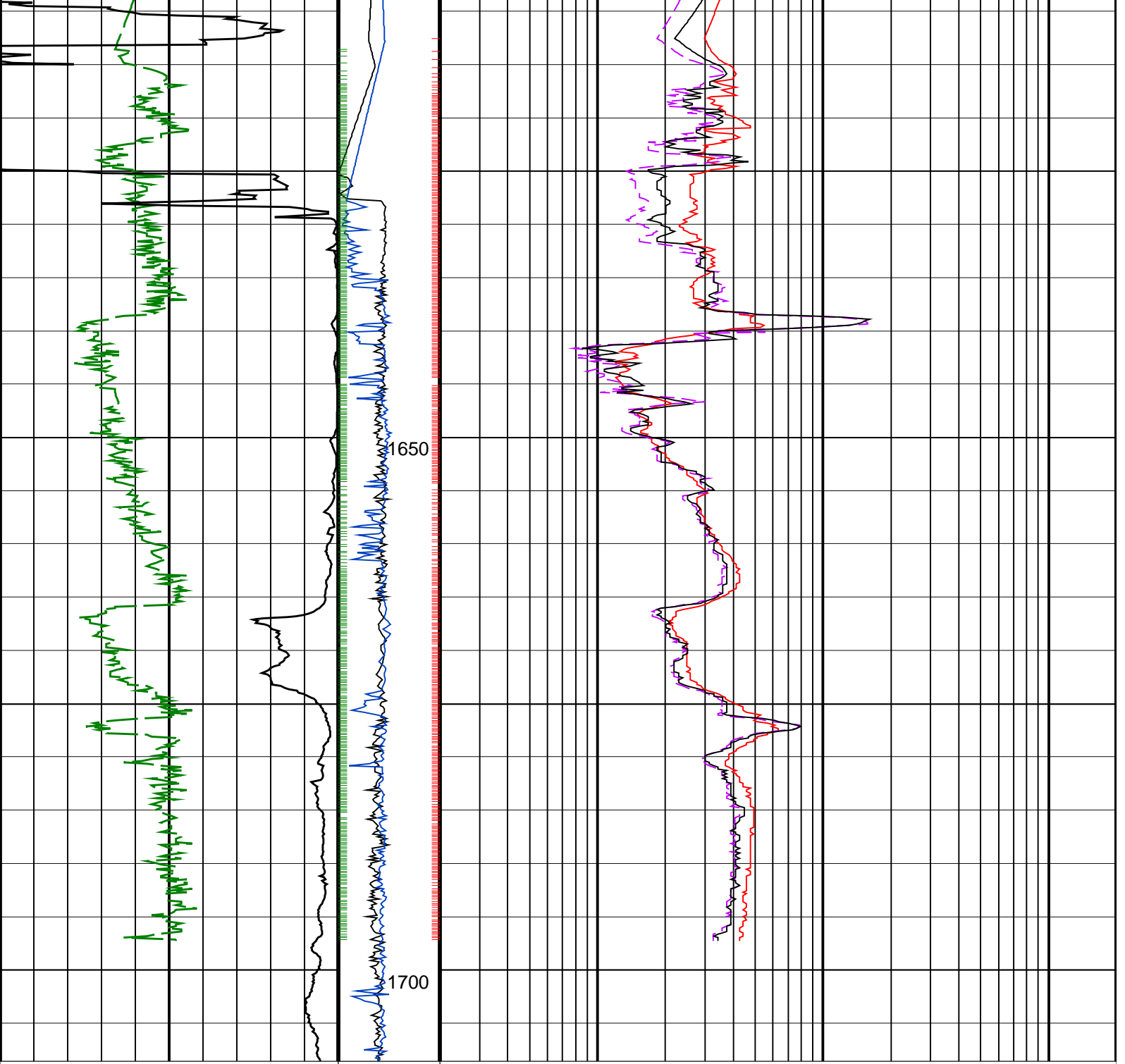
Graphics File Created: 16-Sep-2008 13:46

PIP SUMMARY

- └ ARC Gamma Ray Samples
- └ IMP RP28 PIP

		ARC BHCorr Phase-Shift Resistivity 40-in. at 2 MHz, Real-Time (P40H_RT)	
		0.2	200
		(OHMM)	
ARC Gamma Ray, Real-Time (ARC_GR_RT)	MWD Collar RPM (CRPM_RT)	ARC BHCorr Phase-Shift Resistivity 28-in. at 2 MHz, Real-Time (P28H_RT)	
0	0	0.2	200
(GAPI)	(RPM)	(OHMM)	
200	250		
ROP*5 (ROP5)	PKPK_RPM (Stick RT)	ARC BHCorr Attenuation Resistivity 40-in. at 2 MHz, Real-Time (A40H_RT)	
0	0	0.2	200
(M/HR)	(RPM)	(OHMM)	
200	500		





ROP*5 (ROP5) 200 (M/HR) 0	PKPK_RPM (Stick_RT) (RPM) 0 500	ARC BHCorr Attenuation Resistivity 40-in. at 2 MHz, Real-Time (A40H_RT) (OHMM) 0.2 200
ARC Gamma Ray, Real-Time (ARC_GR_RT) (GAPI) 0 200	MWD Collar RPM (CRPM_RT) (RPM) 0 250	ARC BHCorr Phase-Shift Resistivity 28-in. at 2 MHz, Real-Time (P28H_RT) (OHMM) 0.2 200
		ARC BHCorr Phase-Shift Resistivity 40-in. at 2 MHz, Real-Time (P40H_RT) (OHMM) 0.2 200

PIP SUMMARY

- ┆ ARC Gamma Ray Samples
- ┆ IMP RP28 PIP